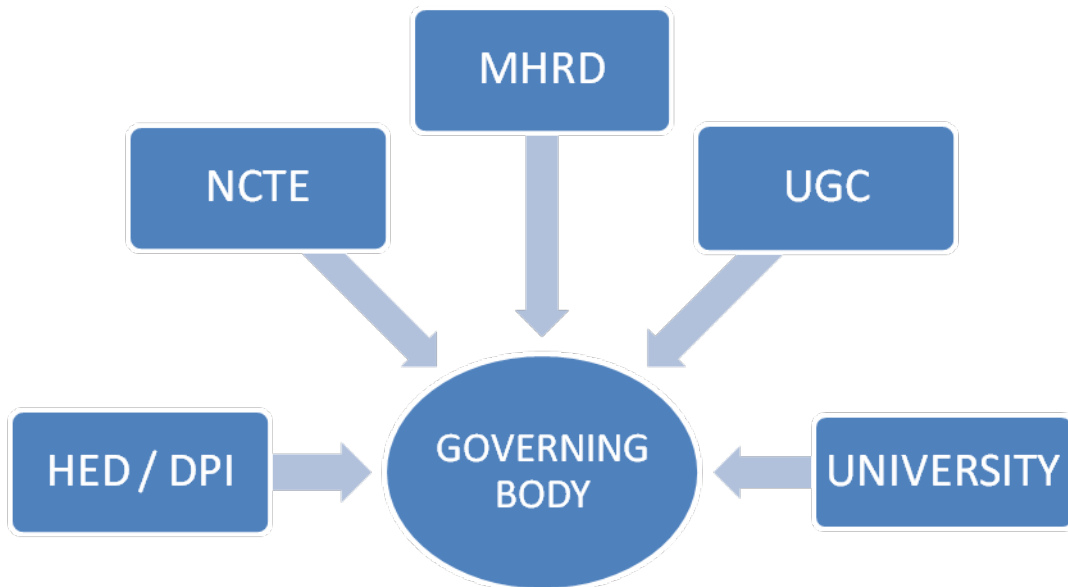
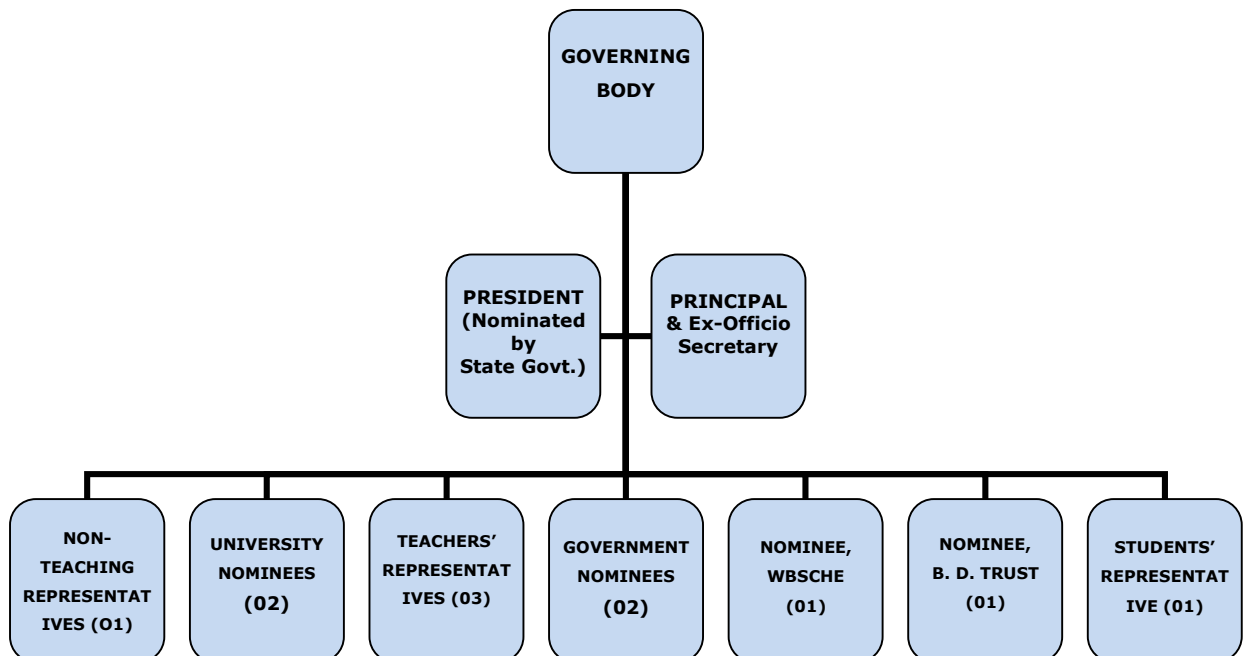


The Governing Body, the apex policy-making body of the college, has to abide by the rules and regulations of the central, state and autonomous bodies of higher education.



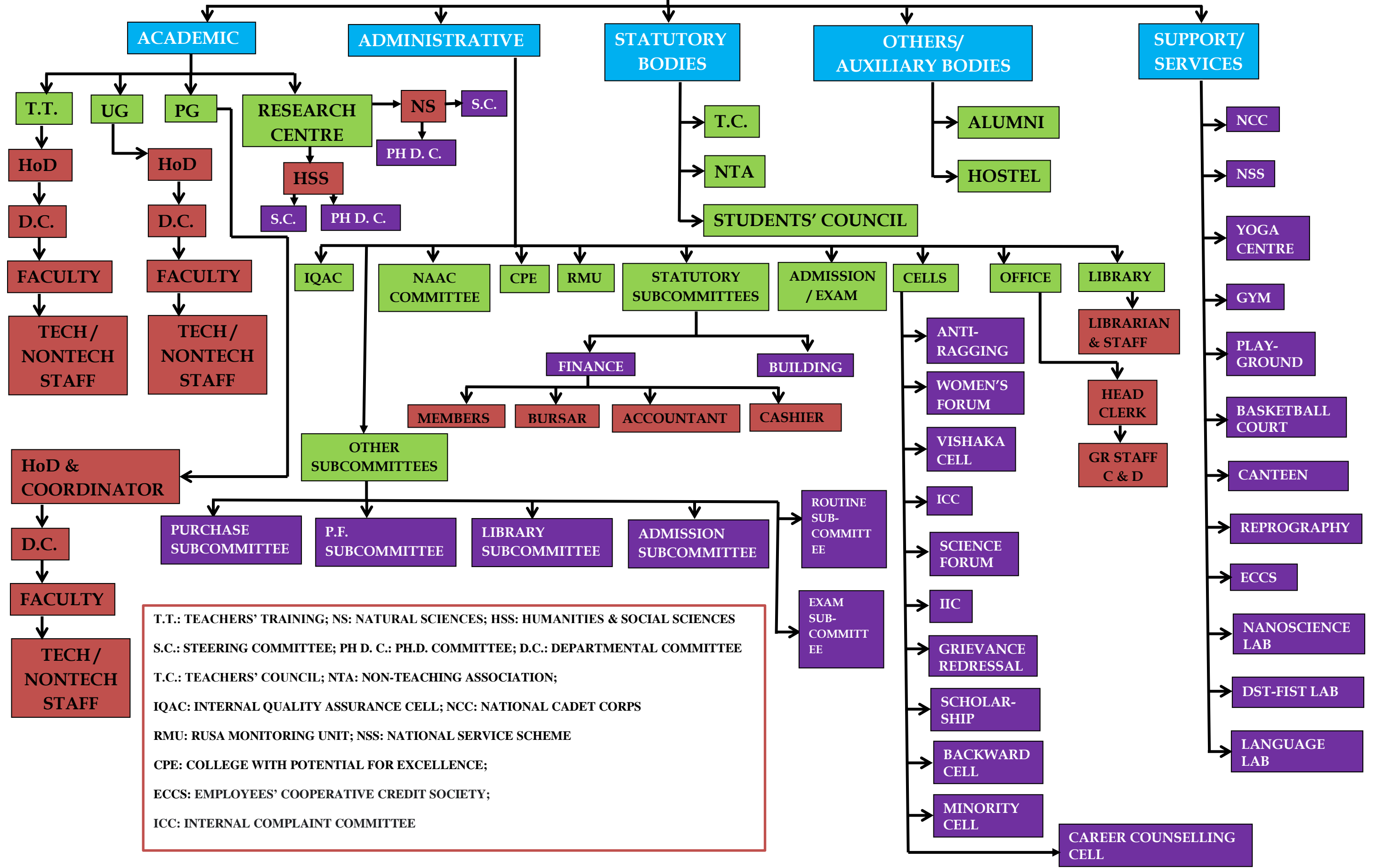
Composition of the Governing Body:

[as per The West Bengal Universities and Colleges (Administration and Regulation) Act, 2017]



INTERNAL ADMINISTRATION

PRINCIPAL



T.T.: TEACHERS' TRAINING; NS: NATURAL SCIENCES; HSS: HUMANITIES & SOCIAL SCIENCES
 S.C.: STEERING COMMITTEE; PH D. C.: PH.D. COMMITTEE; D.C.: DEPARTMENTAL COMMITTEE
 T.C.: TEACHERS' COUNCIL; NTA: NON-TEACHING ASSOCIATION;
 IQAC: INTERNAL QUALITY ASSURANCE CELL; NCC: NATIONAL CADET CORPS
 RMU: RUSA MONITORING UNIT; NSS: NATIONAL SERVICE SCHEME
 CPE: COLLEGE WITH POTENTIAL FOR EXCELLENCE;
 ECCS: EMPLOYEES' COOPERATIVE CREDIT SOCIETY;
 ICC: INTERNAL COMPLAINT COMMITTEE